

Distribution: © BMW NA	Operating Manager	Sales Manager	Accessory Manager	Parts. Manager	Service Manager	Set-Up Workshop
Bulletin Date: 11/17/97 Bulletin #2798		Main Group: 11 Engine		For USA Only		

BMW Motorcycles

Service Bulletin



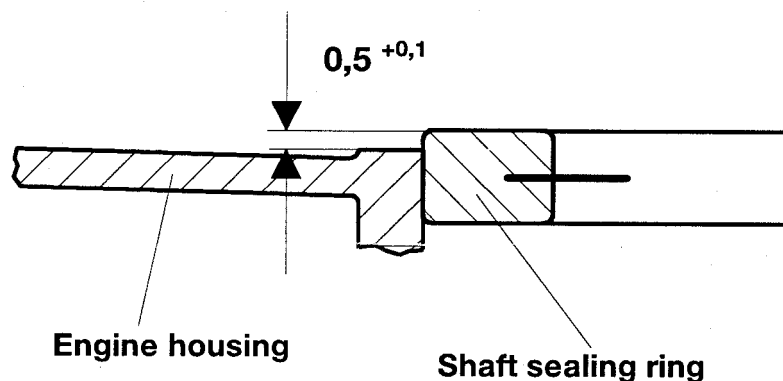
Subject: K Models - Sealing Ring on Output Shaft

Problem: Leaking sealing ring at output shaft.

Cause: An unfavorable set of tolerances may cause the sealing lip of the shaft seal to rest partly on the chamfered area of the clutch support, with the effect that a perfect seal cannot be ensured.

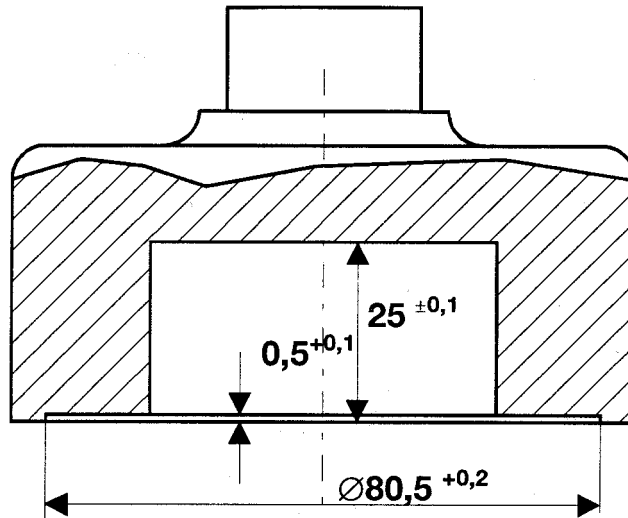
Action: Effective from calendar week 14/97, the shaft sealing ring on production motorcycles will be installed with a projection of $0.5^{+0.1}$ mm towards the engine block surface.

Service remedy: If a complaint is received, the shaft sealing ring is to be driven into the engine housing so that this amount of projection is assured. Modification to special tool BMW No. 88 88 6 111 630



Important: With tool BMW No. 88 88 6 111 630 as it is currently used by the retailer organization, the shaft sealing ring is driven $0.4^{+0.1}$ mm below the housing edge; **therefore it must no longer be used in the present form.**

Please initial and route to the following before filing							
Service	Parts	Sales	Warranty	Tech #1	Tech #2	Tech #3	Tech #4



Sketch not true to scale, dimensions in mm.

Effective from calendar week 27/97, CARTOOL will supply tool BMW No. 88 88 6 111 630 only in its modified form (see sketch).

The modified dimension ($0.5^{+0.1}$) on BMW No. 88 88 6 111 630 is illustrated in the above sketch. The BMW number remains unchanged.

Machining the old tool or purchasing a new tool is required.

Very truly yours,

Frank Stevens
After Sales Manager
Motorcycle Group

Pat Raymond
Service Organization Manager